



Matterport Property Report

135 Sparrowhawk Lake Road

Indoor Scanned Area 3,557 sq. ft.

Sizes and dimensions are approximate; actual may vary

Description

135 Sparrowhawk Lake Road

Indoor Dimensions

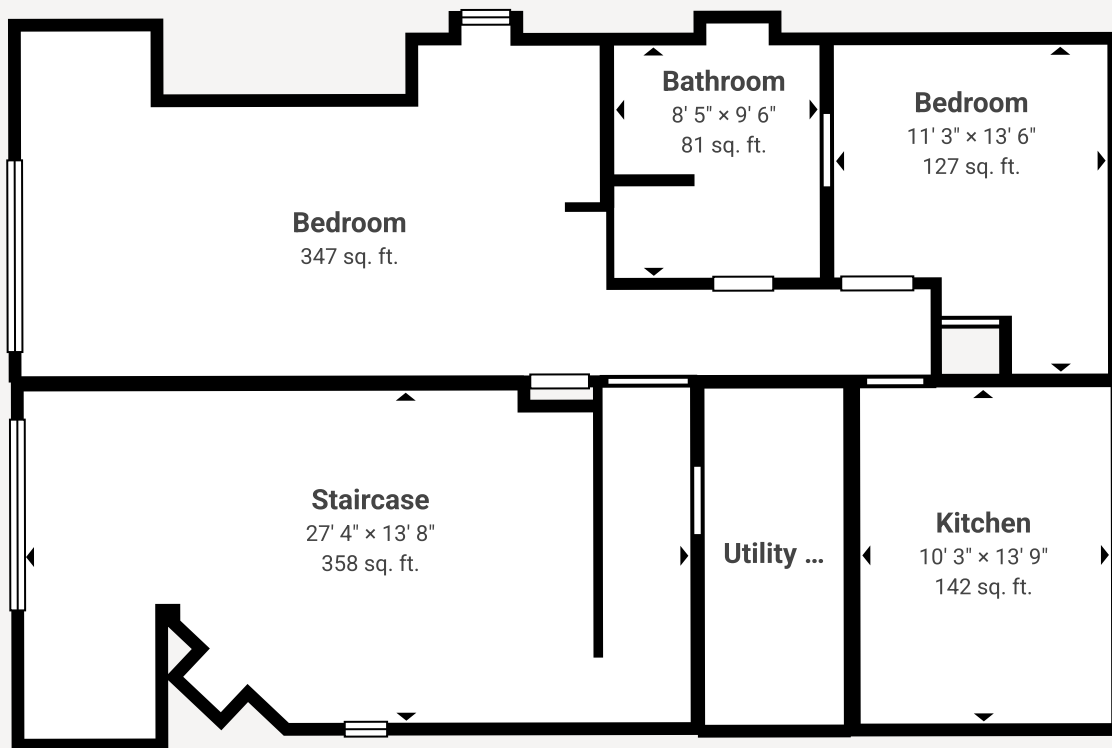
Room	Dimensions	Ceiling Height	Net Floor Area	Gross Floor Area	Floor
Floor 1	–	–	1,134 sq. ft.	1,294 sq. ft.	–
Bathroom	8' 5" × 9' 6"	8' 0"	81 sq. ft.	96 sq. ft.	Floor 1

Bedroom	N/A	9' 10"	347 sq. ft.	386 sq. ft.	Floor 1
Bedroom	11' 3" × 13' 6"	8' 0"	127 sq. ft.	150 sq. ft.	Floor 1
Kitchen	10' 3" × 13' 9"	9' 11"	142 sq. ft.	163 sq. ft.	Floor 1
Staircase	27' 4" × 13' 8"	9' 9"	358 sq. ft.	408 sq. ft.	Floor 1
Utility Room	5' 8" × 13' 10"	10' 10"	79 sq. ft.	91 sq. ft.	Floor 1
Floor 2	–	–	1,032 sq. ft.	1,144 sq. ft.	–
Bathroom	8' 5" × 9' 0"	8' 6"	63 sq. ft.	77 sq. ft.	Floor 2
Bedroom	12' 3" × 14' 3"	9' 2"	162 sq. ft.	184 sq. ft.	Floor 2
Bedroom	12' 3" × 14' 5"	9' 3"	164 sq. ft.	187 sq. ft.	Floor 2
Hallway	5' 0" × 4' 10"	9' 3"	24 sq. ft.	29 sq. ft.	Floor 2
Kitchen	26' 3" × 29' 2"	9' 2"	619 sq. ft.	667 sq. ft.	Floor 2
Patio	7' 7" × 9' 10"	Up to 9' 10"	N/A	N/A	Floor 2
Patio	5' 10" × 9' 10"	Up to 9' 10"	N/A	N/A	Floor 2
Floor 3	–	–	997 sq. ft.	1,119 sq. ft.	–

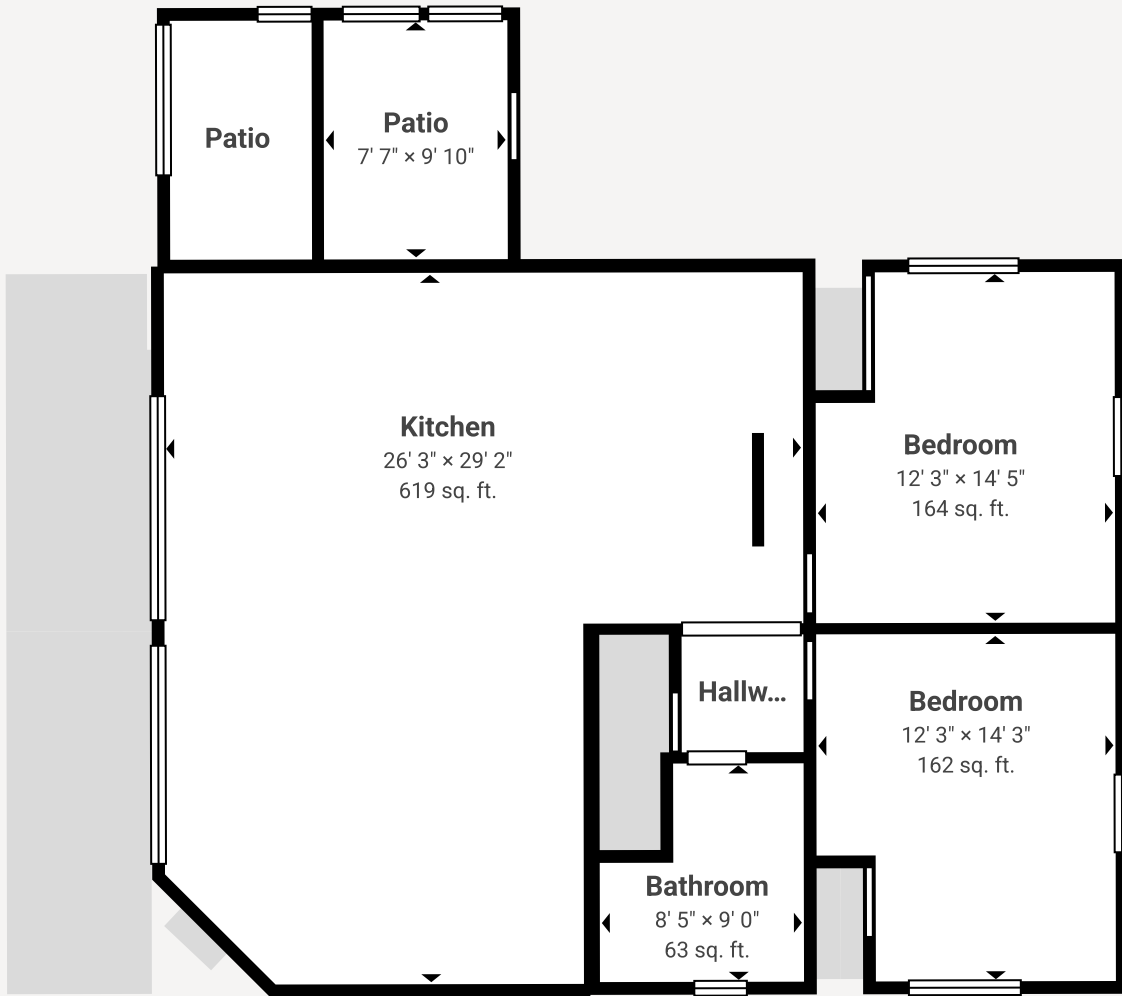
Bathroom	8' 1" x 11' 11"	N/A	83 sq. ft.	98 sq. ft.	Floor 3
Living Room	23' 7" x 29' 0"	Up to 13' 8"	566 sq. ft.	626 sq. ft.	Floor 3
Loft	N/A	Up to 13' 8"	337 sq. ft.	380 sq. ft.	Floor 3
Loft	2' 2" x 5' 1"	7' 6"	11 sq. ft.	15 sq. ft.	Floor 3
Indoor Property Totals	-	-	3,163 sq. ft.	3,557 sq. ft.	-

Layout

Floor 1



Floor 2



Floor 3

